



RAISING STORAGE TO A HIGHER LEVEL

Manufactured by Redco Home

SpaceLift 5200-S Series Attic Lift Site Selection

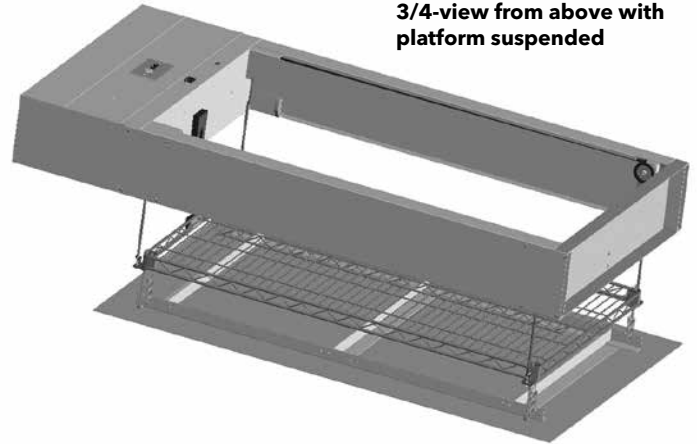
THE SPACELIFT HOME STORAGE SOLUTION

The SpaceLift 5200-S attic lifts, manufactured by Redco Home, provide convenient home storage access. Carrying loads up to 200 pounds, the SpaceLift 5200-S Series features a floor to ceiling travel up to 15 feet, moving up and down suspended by four 500-lb rated 1/2-inch poly-webbed straps.

BEST-IN-CLASS FEATURES INCLUDE:

- Low-profile design, no vertical restriction
- Automated lift with 200-pound load limit
- Platforms have up to 24 cubic feet capacity
- Convenient controls built into motor housing
- Optional wall-mounted control
- Load management system
- Two-year factory warranty

The SpaceLift 5200-S Series attic lifts are for residential use only. Homeowner should check local residential building code requirements and consult a structural engineer before making any changes to floor construction.



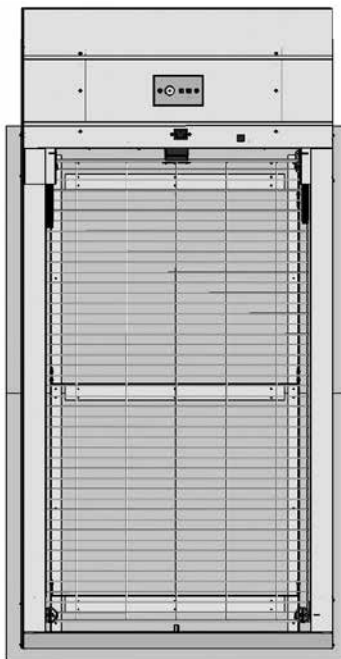
3/4-view from above with platform suspended

Installation Requirements

- Open Truss Floor/Attic Construction
- Ceiling Thickness/Joist Depth:
 - 7 to 14 inches-lift fits between joists
 - 4 to 6 inches-lift extends above attic floor
- Power Required: Dedicated 15-amp circuit
- Electrical Outlet: Available within 4 feet (110-120 VAC)
- Assembly: Components assembled on site
- Floor Load: Check local building codes (min 35-lbs/sq ft)

5200-S Series Specifications

- Lift Weight Capacity: 200 lbs
- Lift Speed: 3 inches per second
- Ceiling Height Range: to 15 feet



Top view: SpaceLift 5200-S Series lift, view stowed with ceiling cover.

Model 5222-S

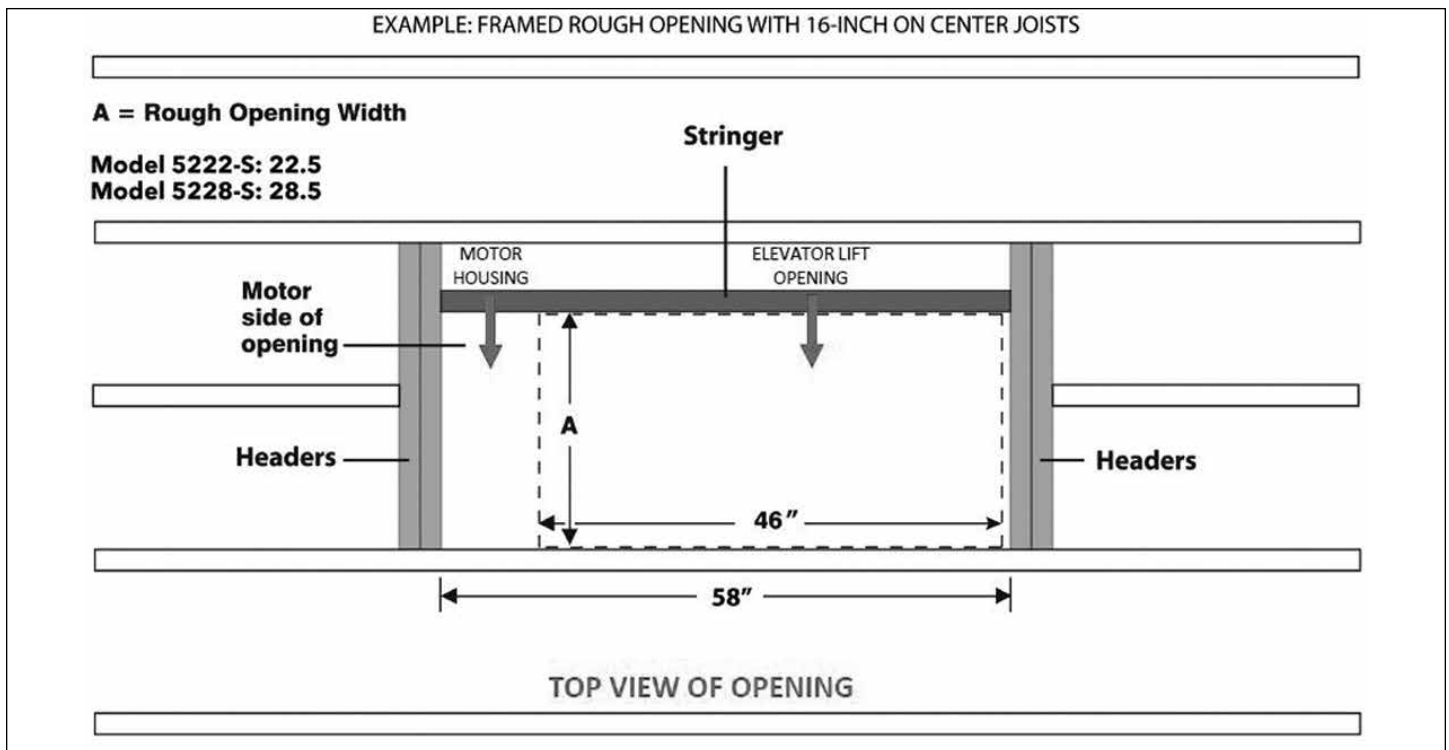
Model 5228-S

Dimensions (inches):	22 W x 57.5 L x 7 H	28 W x 57.5 L x 7 H
Rough Framed Opening:	22.5 x 58 (+/- 1/8)	28.5 x 58 (+/- 1/8)
Internal Platform Area:	18 x 41	24 x 41
Landing Space Area:	24.5 x 48	30.5 x 48
Unit Weight:	75 lbs	88 lbs

Note: Storage items cannot extend beyond internal platform area. Select model to be sure all items fit within platform dimensions.

Protected by U.S. Patents No. 8,292,031 and 9,120,645 B2.

FLOOR SECTION and dimensions



Note: Rough opening size must include allowance for all penetrations such as joist hangers (if required). It may be necessary to increase rough opening size slightly to accommodate penetrations.

5200-S Series Site Selection Objective

Select a location for the SpaceLift 5200-S Series unit free of hazards and obstructions providing adequate room for installation and operation.

1. Framed Floor Opening:

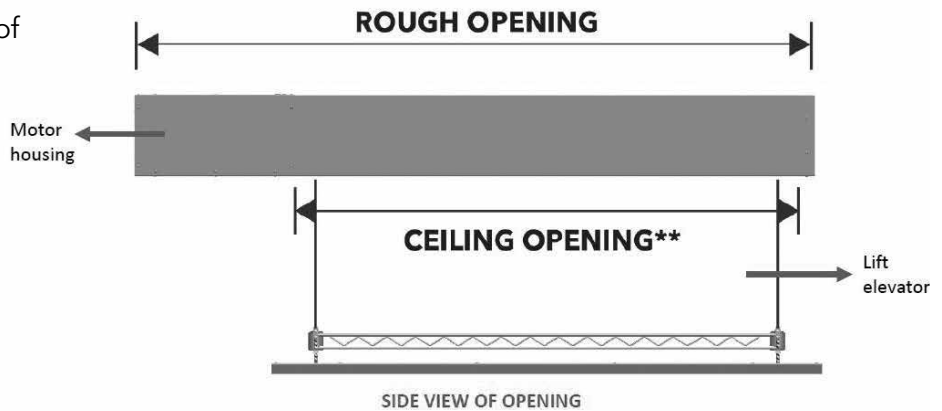
See model chart, opening variance of +/- 1/8 inch. **With 24 inch on center joists the SpaceLift Model 5222-S requires no joist cut or stringer.**

Note: Framed opening must be square. Sidewalls of opening must be smooth and perpendicular.

2. Travel Distance:

The maximum platform floor to ceiling travel distance is 8 to 15 feet with the preferred travel distance set once the SpaceLift unit is in place and the ceiling cover is installed.

***Note:** If travel height is higher than 15 feet, even at maximum deployment, the SpaceLift platform and ceiling cover will NOT reach the floor before stopping. Loading or unloading without the platform firmly on the floor or a table is not recommended as this may produce swaying and thus prevent proper operation.



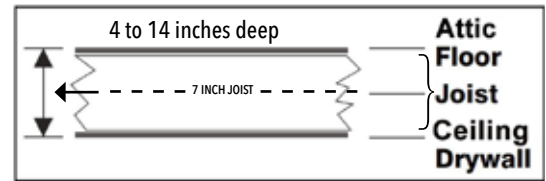
	Model 5222-S	Model 5228-S
Rough Framed Opening:	22.5 x 58 (+/- 1/8)	28.5 x 58 (+/- 1/8)
Ceiling Drywall Opening:	22.5 x 46	28.5 x 46
Landing Space Area:	24.5 x 48	30.5 x 48

****Note:** Ceiling Opening is smaller than, and centered within, the Ceiling Cover.

3. Ceiling Thickness:

Minimum 4 inches to maximum 14 inches. Ceiling thickness is measured from finished ceiling of the lower level to finished floor of the upper level.

- 7 to 14 inches-lift fits between joists
- 4 to 6 inches-lift extends above attic floor



Ceiling Thickness

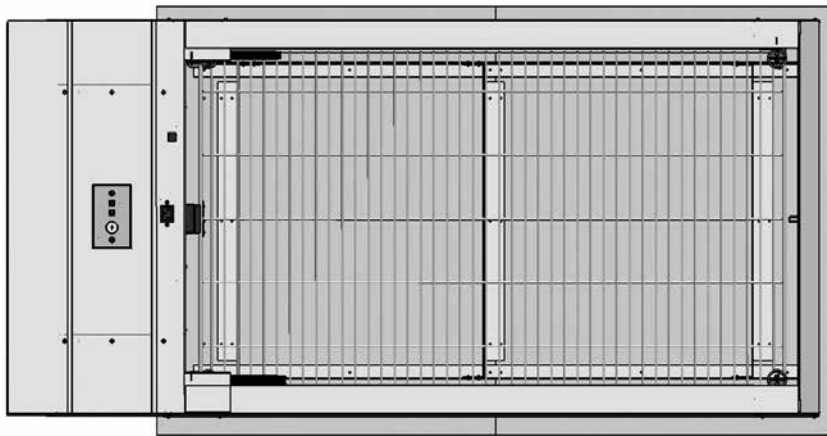
4. Finished Floor:

Must be level and finished with 1/2 to 3/4 inch plywood or comparable material prior to installation.

5. Power Supply:

110 VAC to 120 VAC power required. Dedicated 15 amp circuit.

Note: Plugged into standard electrical outlet, the outlet must be no more than 4 feet from the lift platform power junction box once it is mounted.



SpaceLift 5200-S Series lift, view stowed from top with ceiling cover.

6. Control Units:

Model 5200-S Series lifts are operated by controls on the motor housing or an optional Wall Mount Control unit. Up and down buttons control platform movement, which stops at top or bottom of travel sequence, when the button is released or when sensors indicate an object has interfered with the lift operation.

7. CAT-5 Cable:

Optional Wall Mount Control installation must allow connection of a CAT-5 cable between the remote control unit and the 5200-S Series unit.



Optional Wall Mount Control

(Part no. ES-SLP-WMCKIT)



1 Gang Electrical Box (with Optional Wall Mount Control)

Note: Detailed SpaceLift 5200-S Series installation and operation instructions are provided on the Product page at SpaceLiftProducts.com. Please download and review thoroughly prior to beginning the installation process.

Protected by U.S. Patents No. 8,292,031 and 9,120,645 B2.

MANUFACTURED BY



515 Fan Hill Rd., Monroe, CT 06468

SpaceLift

RAISING STORAGE TO A HIGHER LEVEL

For questions, call 877-275-8088
Or visit SpaceLiftProducts.com

This page is intentionally blank.